

**Micro SD card
Interface Breakout Module
for 3.3V & 5V Logic Level**

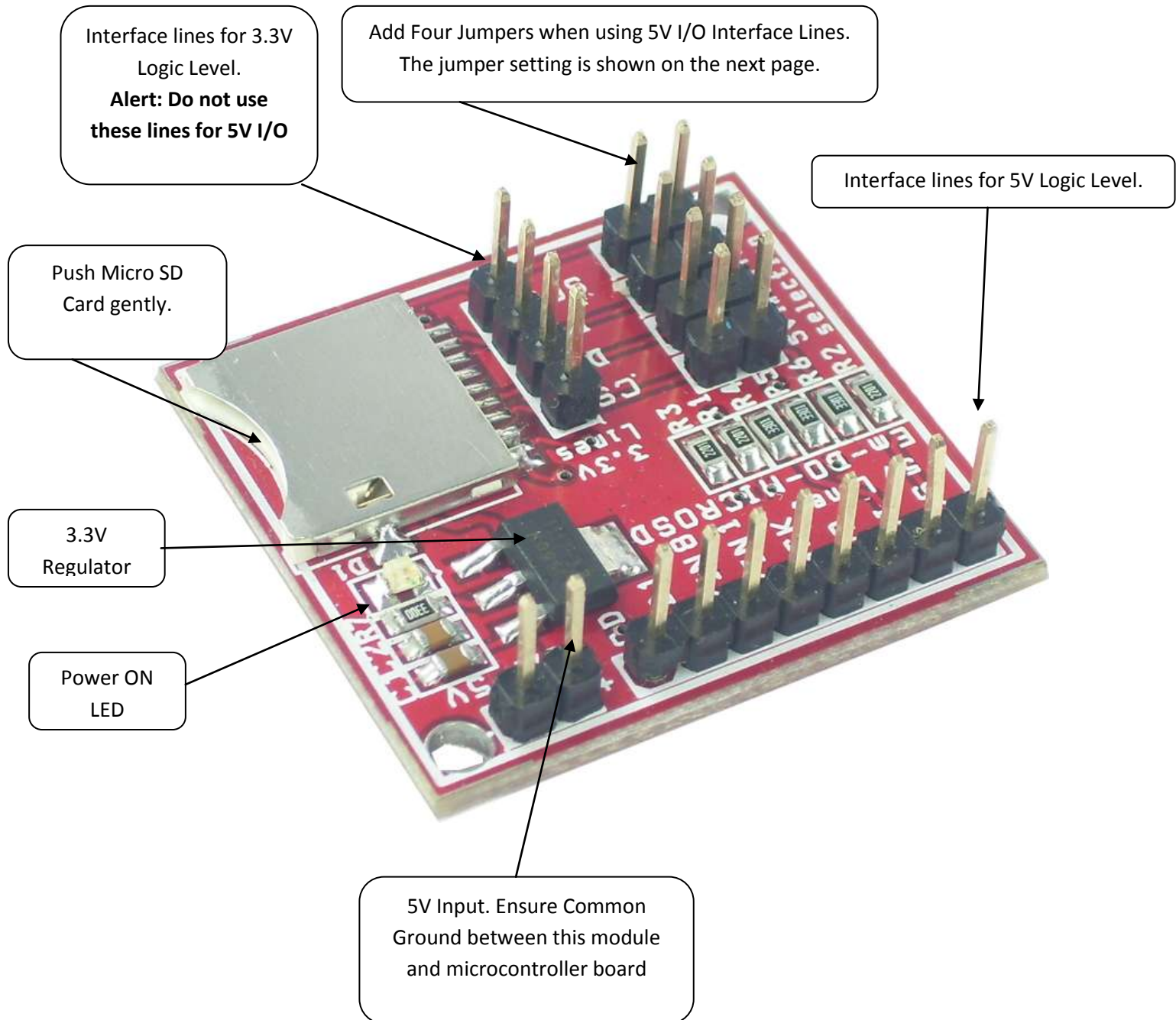
Sr. Num.	Topics	Page
1	About Breakout Modules	3
2	SD Card Module Hardware Details	4
3	Important information	7

1. About Breakout Modules

The Breakout Module product series is designed for R&D purpose where end user can choose variety of standalone interface modules and can interface them with any microcontroller.

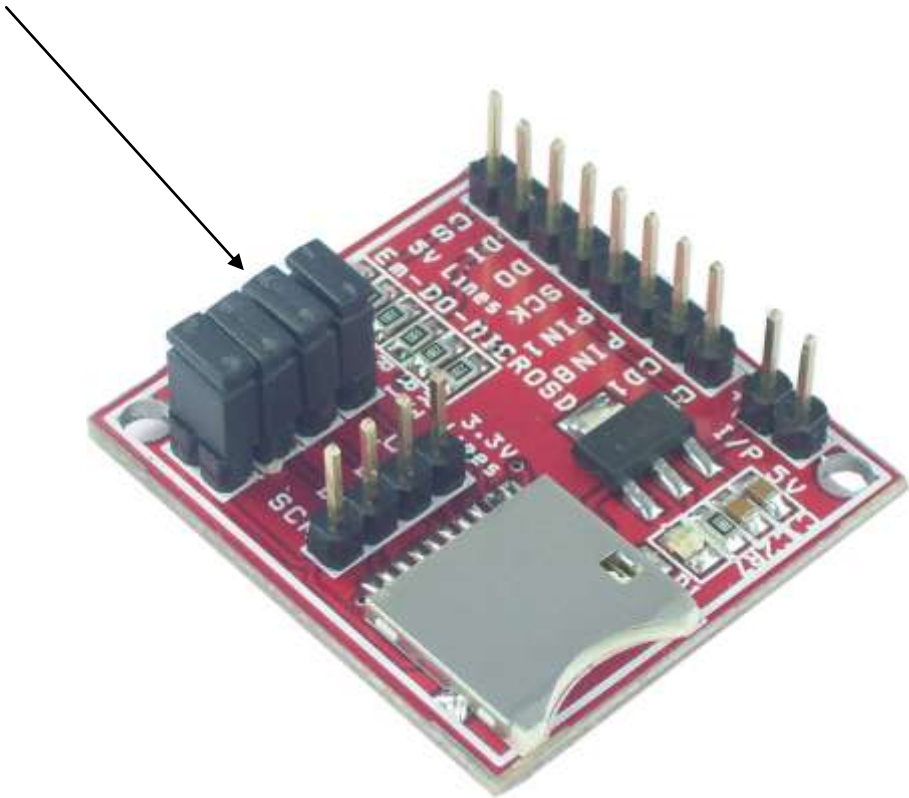
The Schematics for each breakout module is documented at the end of respective product datasheet.

2. SD Card Module Hardware Details

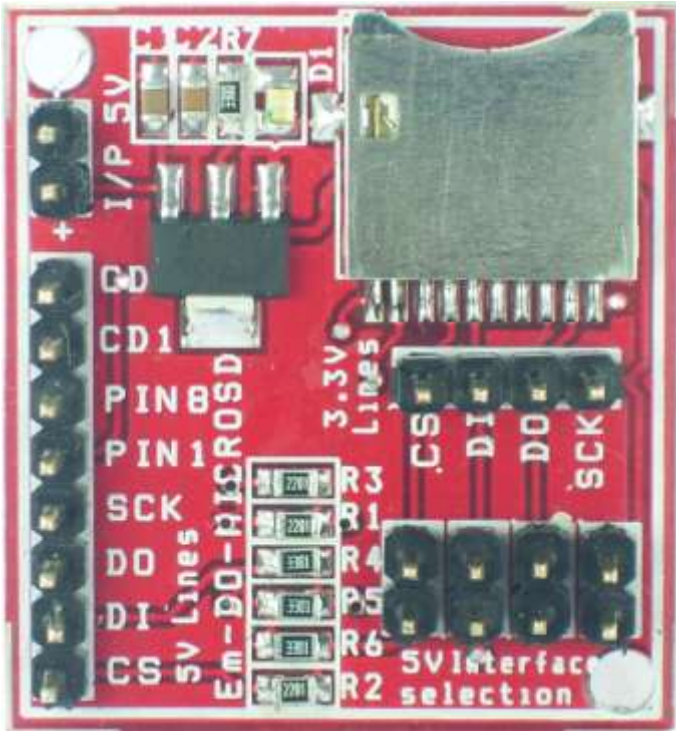


Micro SD Card Module

Use this jumper Settings when using 5V I/O Interface lines

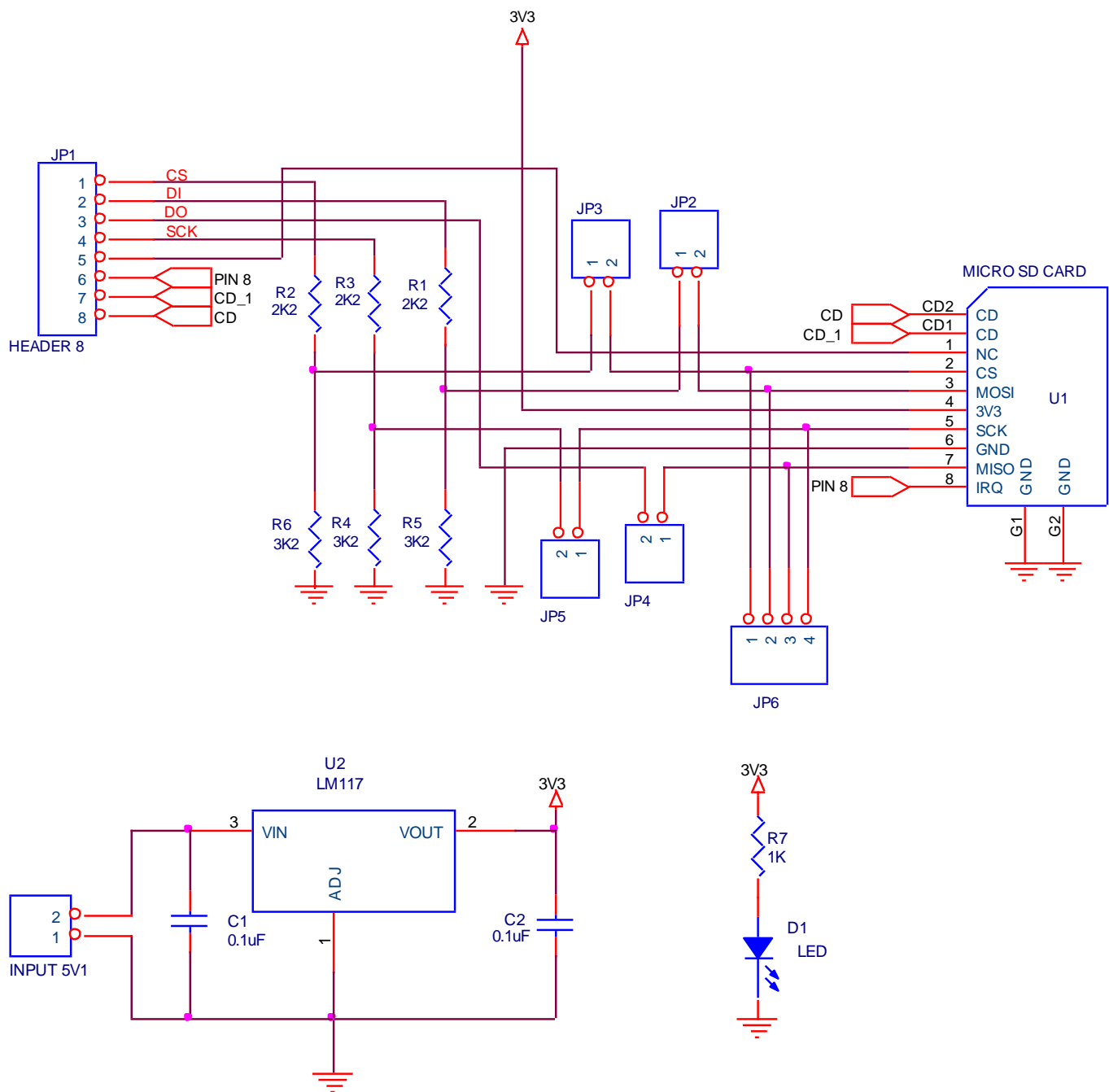


Details of interface Lines



Module's Pin	Controller's Pin
SCK	SCK
DO	MISO
DI	MOSI
CS	CS

Module Schematic:



4. Important information

1. The “Micro SD card Interface Breakout Module for 3.3V & 5V Logic Level” product is designed for experiments and is not suitable to be used in life support and mission critical products.
2. “Micro SD card Interface Breakout Module for 3.3V & 5V Logic Level” requires 5VDC power source.
3. Always request support over email as it allows the technical team to answer it in more detail which is not possible over phone.
4. Manufactured by:

Embedded Market
205 Decision Tower
Next To CityPride
Satara Road
Pune 411037 India
Ph:+91 20 24228818
Email for Support- support@embeddedmarket.com
Email for Sales – sales@embeddedmarket.com
Website – www.EmbeddedMarket.com