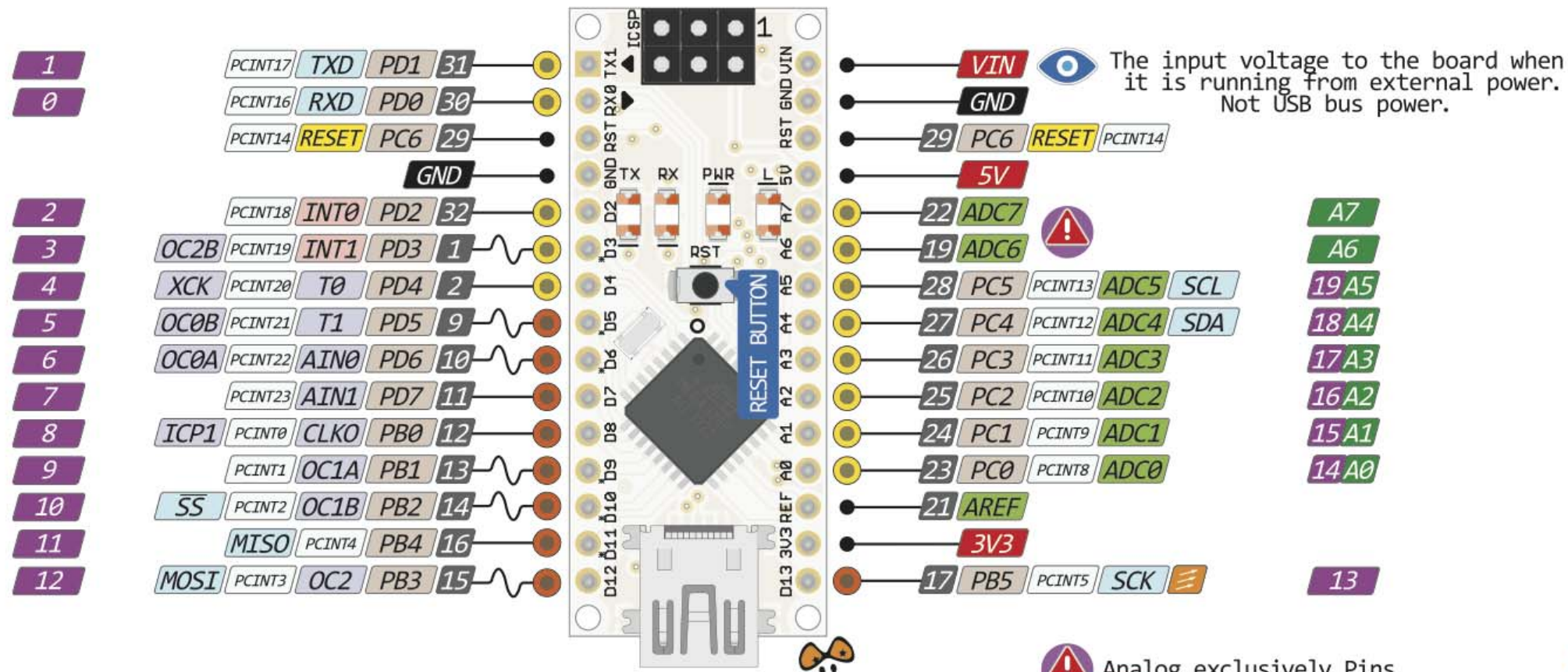
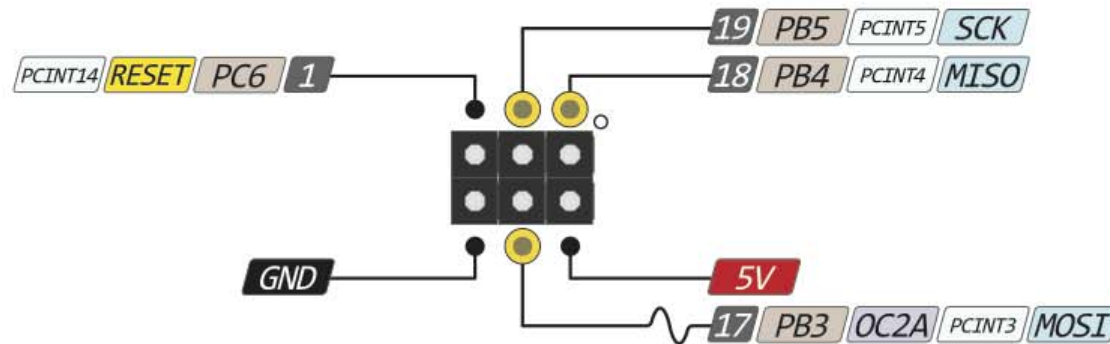


NANO PINOUT



- Power
- GND
- Serial Pin
- Analog Pin
- Control
- INT
- Physical Pin
- Port Pin
- Pin function
- Interrupt Pin
- PWM Pin
- Port Power

Warning: Absolute MAX per pin 40mA recommended 20mA

Warning: Absolute MAX 200mA for entire package



Warning: The power sum for each pin's group should not exceed 100mA