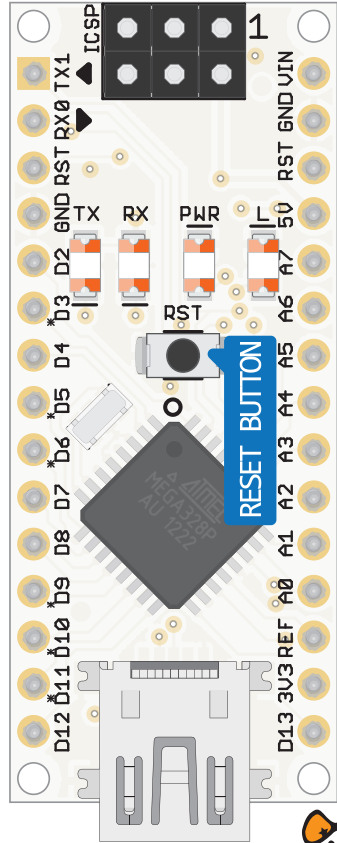


NANO PINOUT

1
0

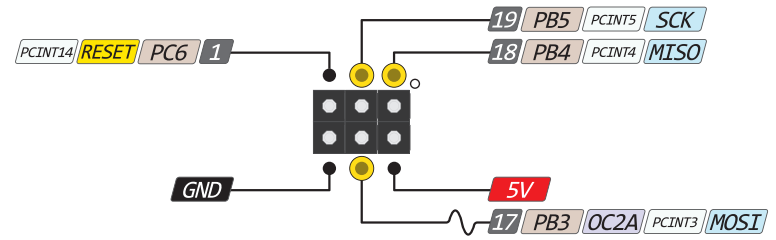
2
3
4
5
6
7
8
9
10
11
12

PCINT17 TXD PD1 31
PCINT16 RXD PD0 30
PCINT14 RESET PC6 29
GND
PCINT18 INT0 PD2 32
OC2B PCINT19 INT1 PD3 1
XCK PCINT20 T0 PD4 2
OC0B PCINT21 T1 PD5 9
OC0A PCINT22 AIN0 PD6 10
PCINT23 AIN1 PD7 11
ICP1 PCINT0 CLK0 PB0 12
PCINT1 OC1A PB1 13
SS PCINT2 OC1B PB2 14
MOSI PCINT3 OC2 PB3 15
MISO PCINT4 PB4 16



VIN
GND
29 PC6 RESET PCINT14
5V
22 ADC7
19 ADC6
28 PC5 PCINT13 ADC5 SCL
27 PC4 PCINT12 ADC4 SDA
26 PC3 PCINT11 ADC3
25 PC2 PCINT10 ADC2
24 PC1 PCINT9 ADC1
23 PC0 PCINT8 ADC0
21 AREF
3V3
17 PB5 PCINT5 SCK

A7
A6
19 A5
18 A4
17 A3
16 A2
15 A1
14 A0
13



The input voltage to the board when it is running from external power. Not USB bus power.

Power

GND

Serial Pin

Analog Pin

Control

INT

Physical Pin

Port Pin

Pin function

Interrupt Pin

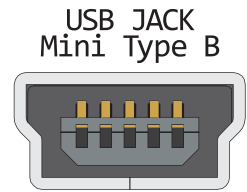
PWM Pin

Port Power

The power sum for each pin's group should not exceed 100mA

Absolute MAX per pin 40mA recommended 20mA

Absolute MAX 200mA for entire package



Analog exclusively Pins