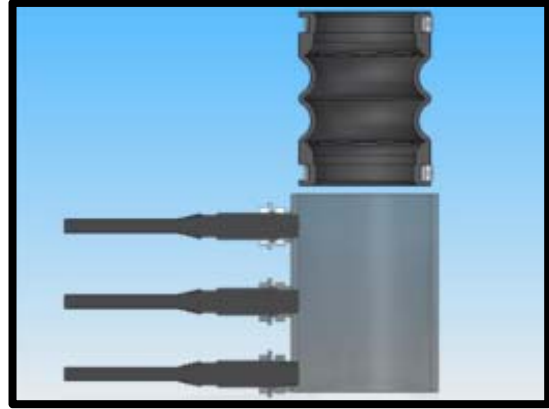
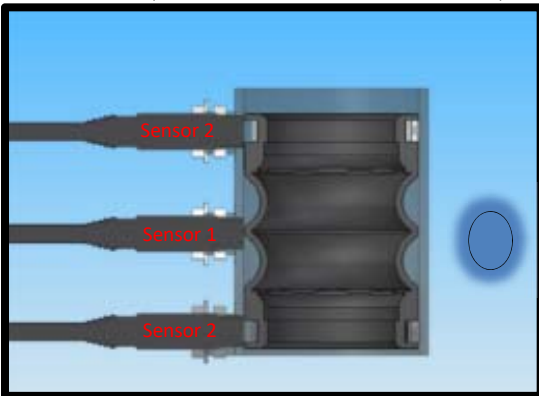




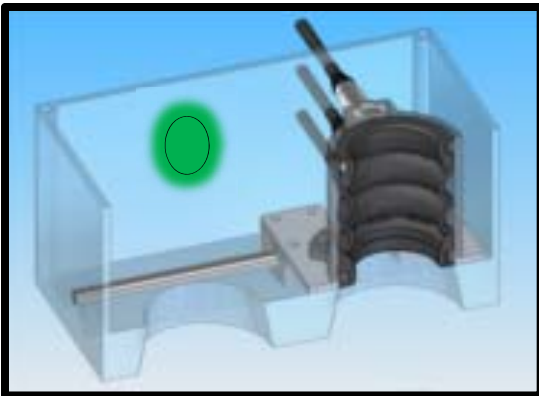
Sensor 1 (Capacitive Prox. Sensor)
Sensor 2 (Inductive Prox. Sensor In Series)



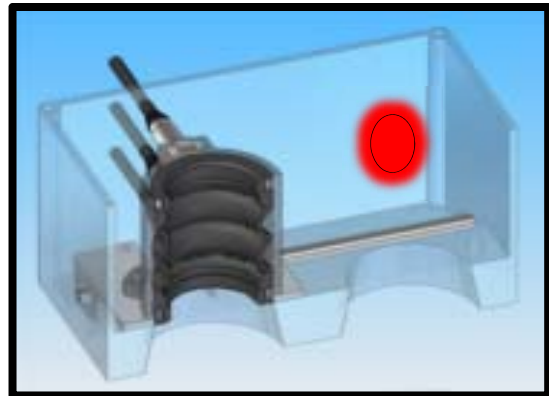
Chamber Empty All LED's Off



Part In Chamber Blue LED On For XX
Milliseconds Then Off



If Clamps Are Detected Green LED Lights And
Sends Signal To Air Valve To Move Carrige Into
Good Position And LED Stays On For XX
Miliseconds For Part To Clear Then Moves Back
Into Center Position And Loop Starts Over



If AClamp Is Not Detected Red LED Lights And
Sends Signal To Air Valve To Move Carrige Into
Bad Position And LED Stays On For XX
Miliseconds For Part To Clear Then Moves Back
Into Center Position And Loop Starts Over