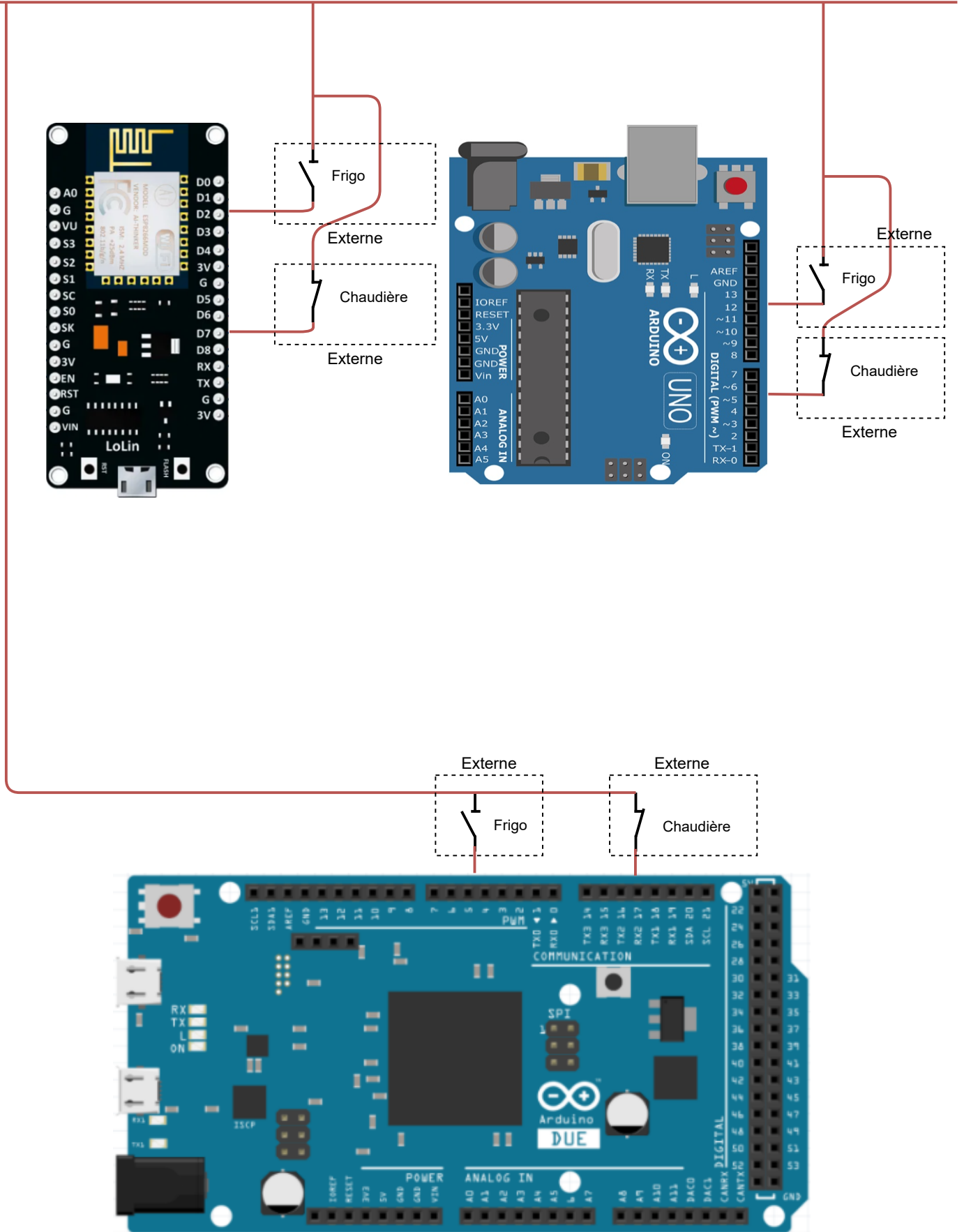


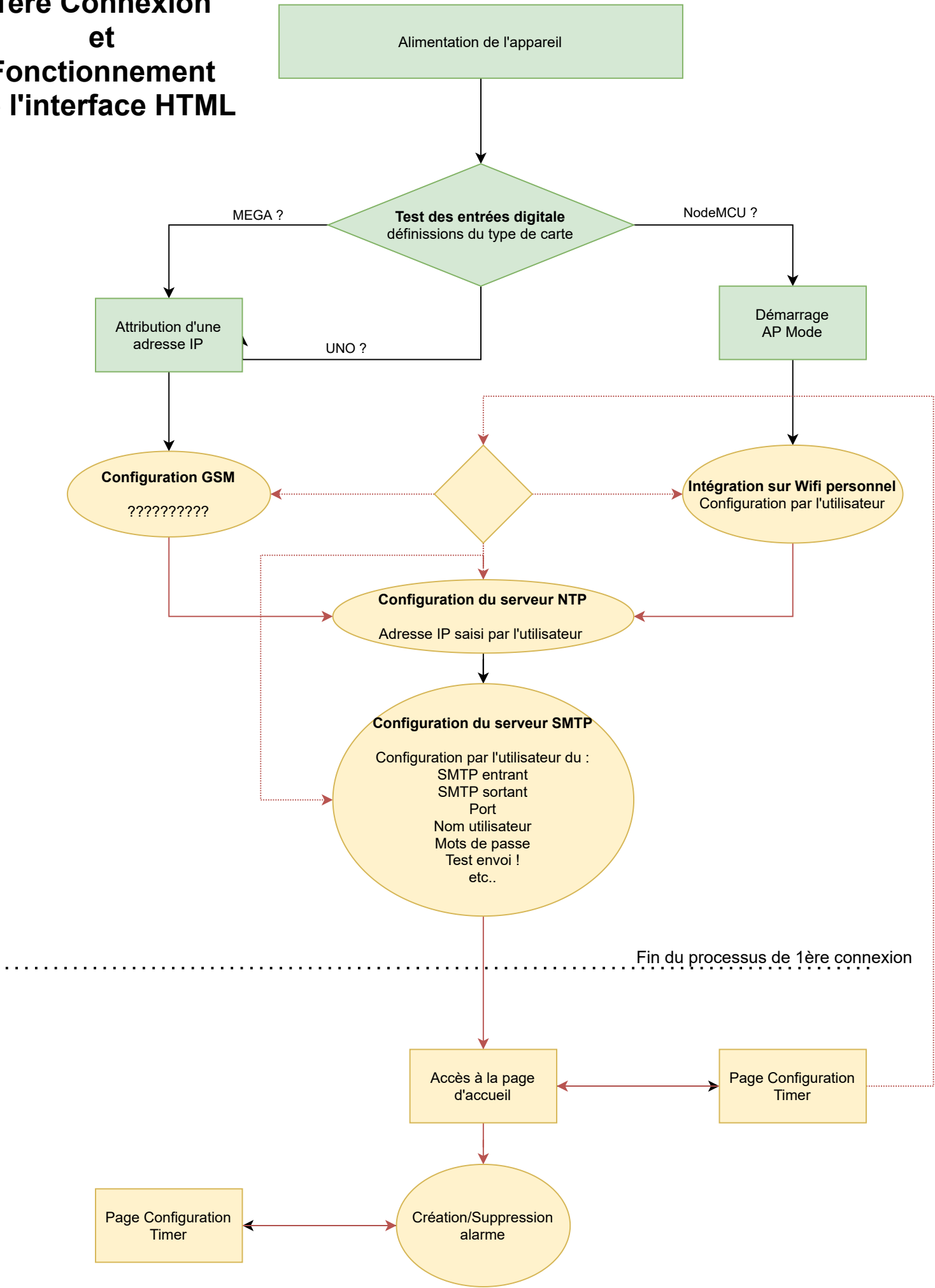
Schéma de principe carte UNO et MEGA + NodeMCU

GND

5V



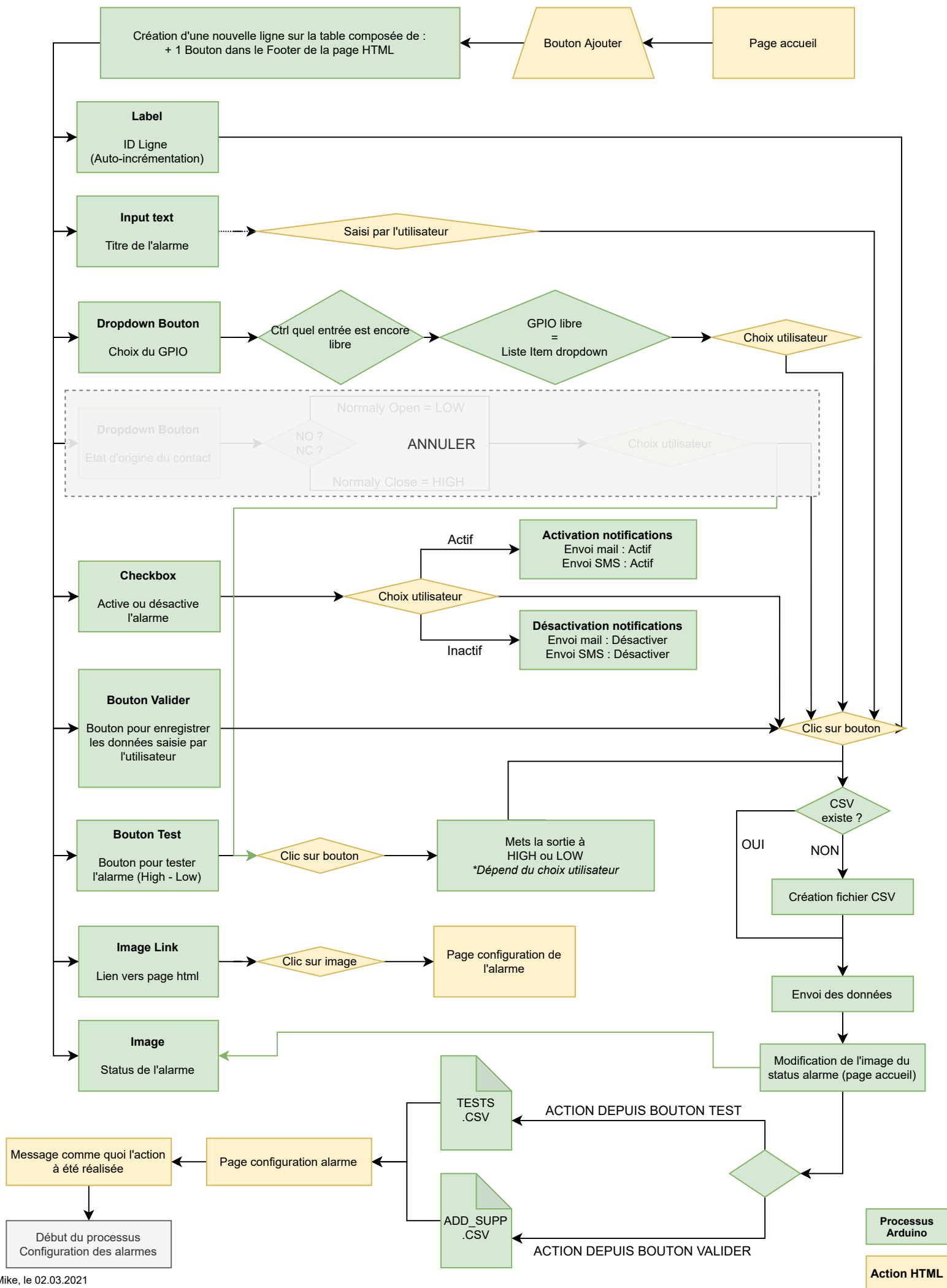
1ère Connexion et Fonctionnement de l'interface HTML



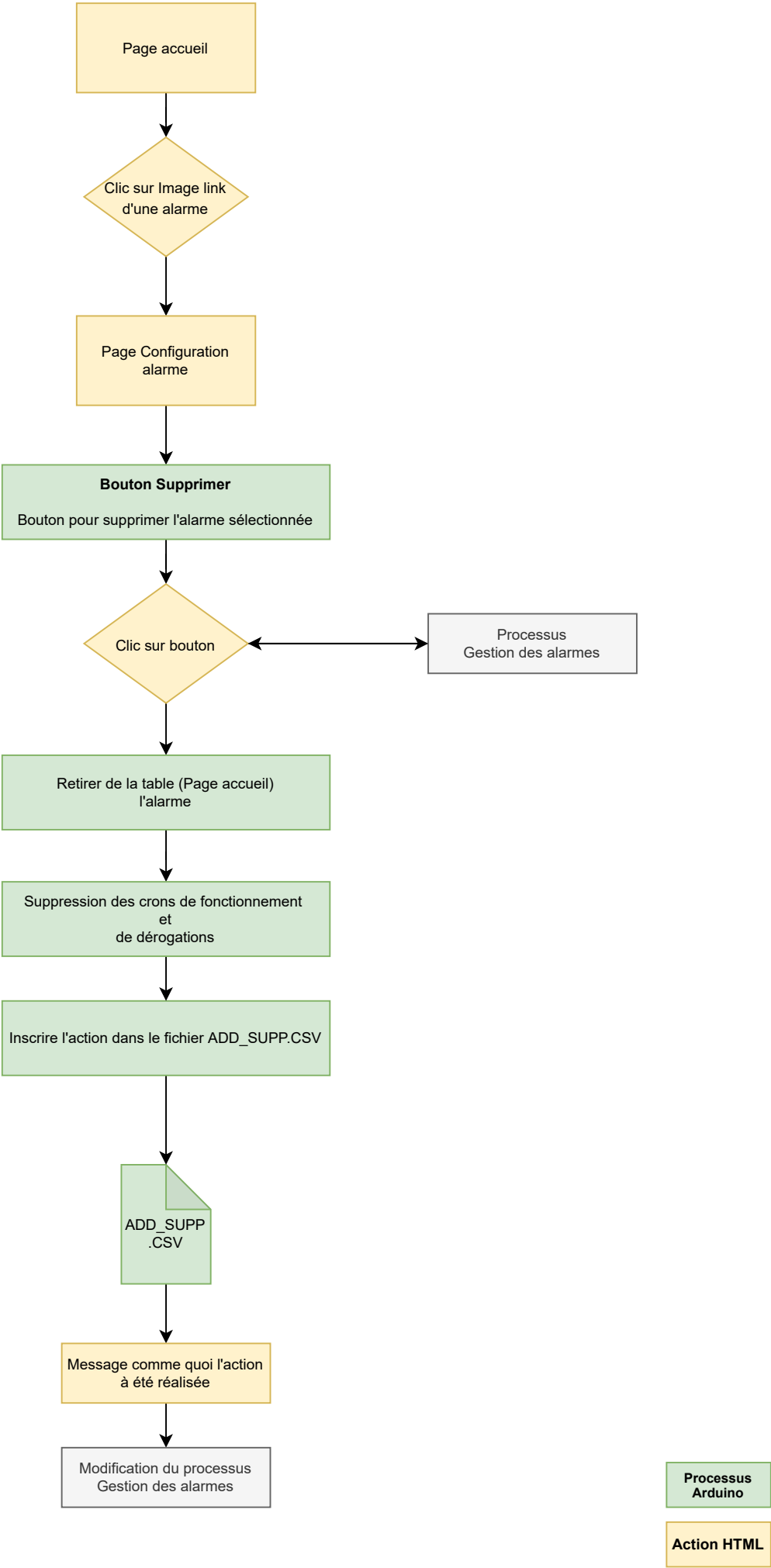
Processus Arduino

Action HTML

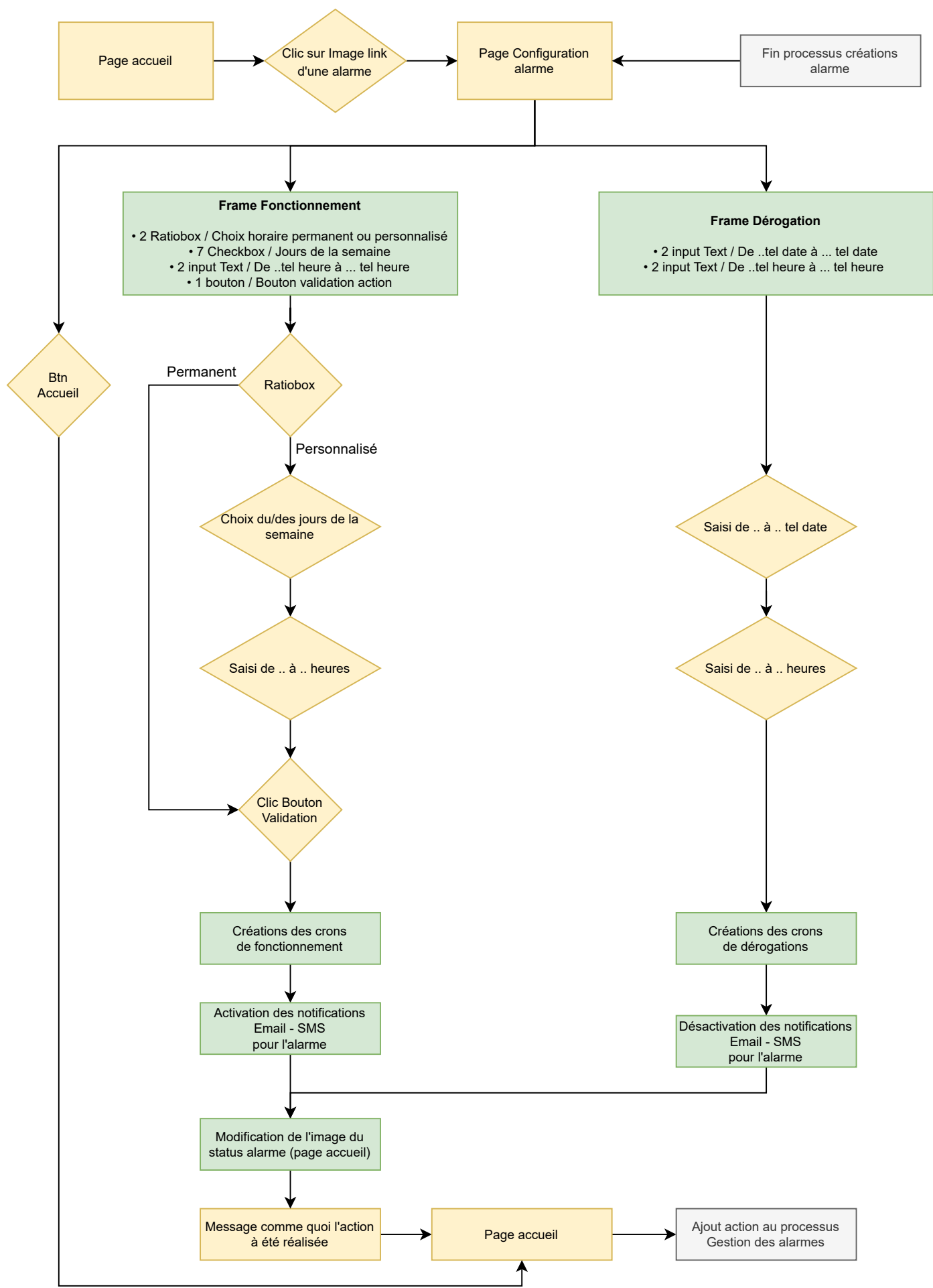
Création d'une alarme



Suppression d'une alarme



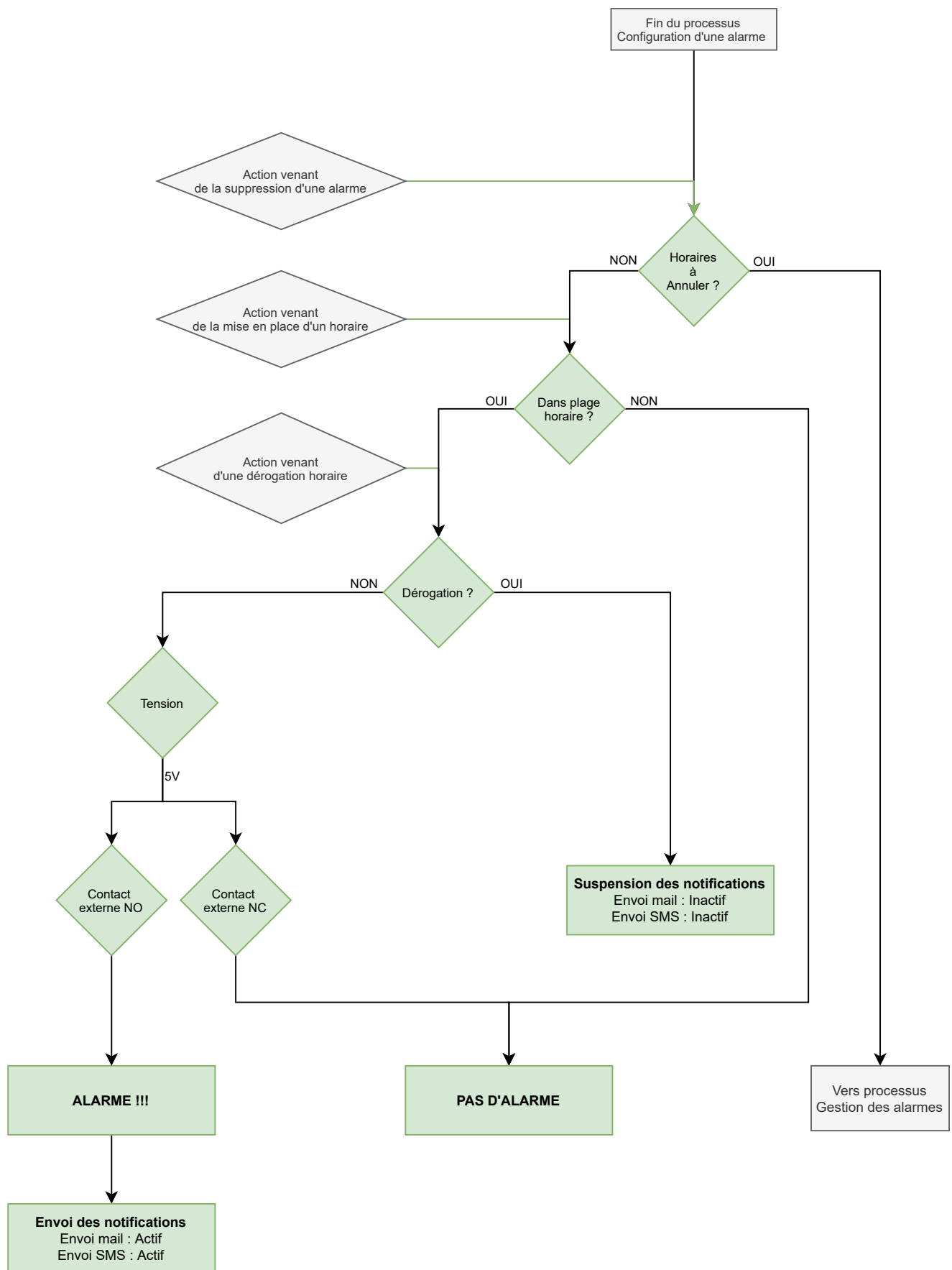
Configuration alarmes



Processus
Arduino

Action HTML

Gestion des alarmes



Processus
Arduino

Action HTML