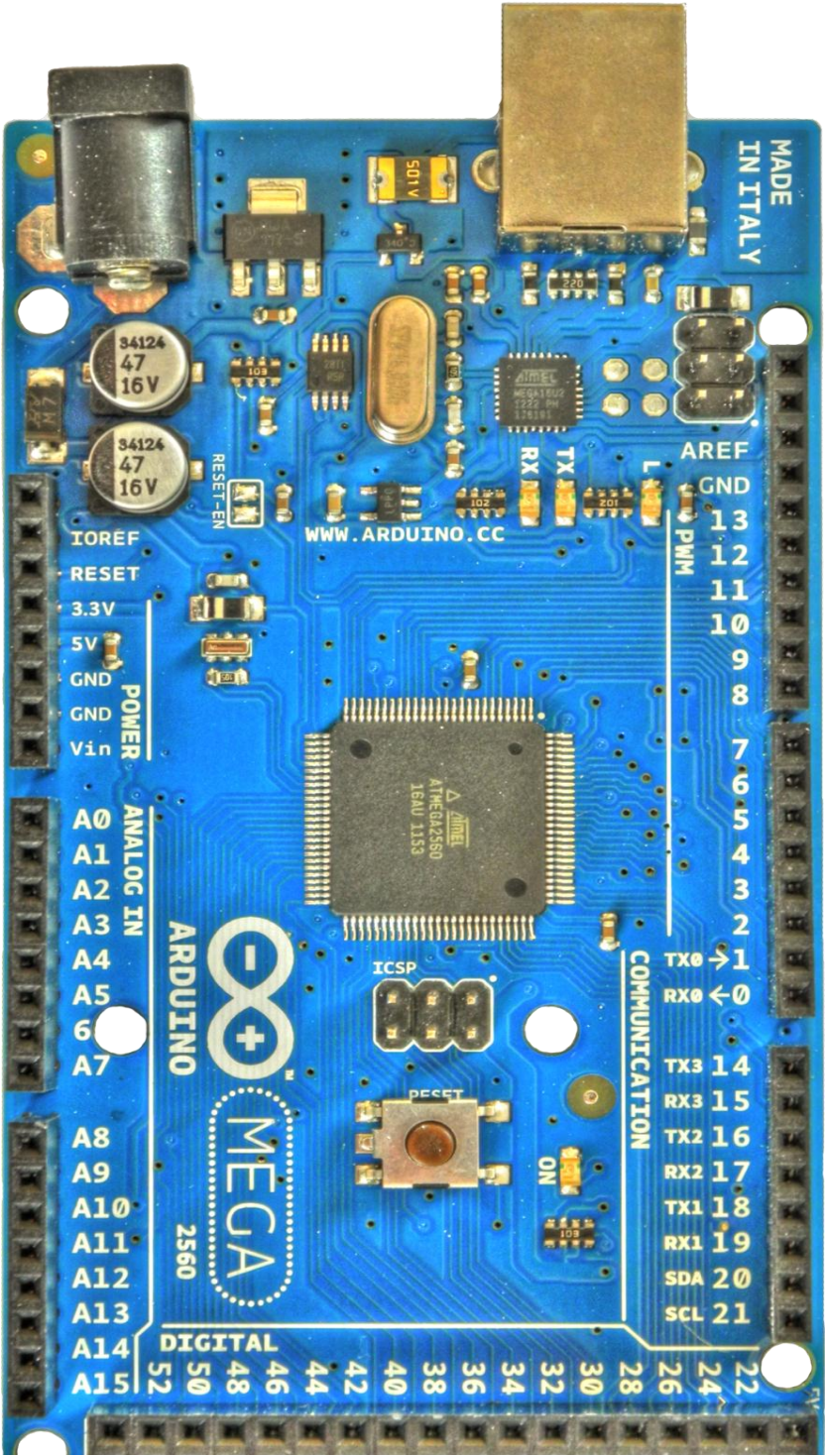


Atmega2560 Pin Function

|                    |
|--------------------|
| Analog Related Pin |
| Port Pin           |
| Physical Pin       |

|          |        |     |    |
|----------|--------|-----|----|
|          | ADC.0  | F.0 | 97 |
|          | ADC.1  | F.1 | 96 |
|          | ADC.2  | F.2 | 95 |
|          | ADC.3  | F.3 | 94 |
| TCK      | ADC.4  | F.4 | 93 |
| TMS      | ADC.5  | F.5 | 92 |
| TDO      | ADC.6  | F.6 | 91 |
| TDI      | ADC.7  | F.7 | 90 |
| PCINT 16 | ADC.8  | K.0 | 89 |
| PCINT 17 | ADC.9  | K.1 | 88 |
| PCINT 18 | ADC.10 | K.2 | 87 |
| PCINT 19 | ADC.11 | K.3 | 86 |
| PCINT 20 | ADC.12 | K.4 | 85 |
| PCINT 21 | ADC.13 | K.5 | 84 |
| PCINT 22 | ADC.14 | K.6 | 83 |
| PCINT 23 | ADC.15 | K.7 | 82 |



|              |          |                         |                     |           |
|--------------|----------|-------------------------|---------------------|-----------|
| Physical Pin | Port Pin | Atmega2560 Pin Function | Digital / PWM - PIN | Interrupt |
| 98           |          | AREF                    |                     |           |
| 26           | B.7      | OC0A/OC1C               | 13 PWM              | PCINT 7   |
| 25           | B.6      | OC1B                    | 12 PWM              | PCINT 6   |
| 24           | B.5      | OC1A                    | 11 PWM              | PCINT 5   |
| 23           | B.4      | OC2A                    | 10 PWM              | PCINT 4   |
| 18           | H.6      | OC2B                    | 9 PWM               |           |
| 17           | H.5      | OC4C                    | 8 PWM               |           |
| 16           | H.4      | OC4B                    | 7 PWM               |           |
| 15           | H.3      | OC4A                    | 6 PWM               |           |
| 5            | E.3      | OC3A                    | 5 PWM               | AIN 1     |
| 1            | G.5      | OC0B                    | 4 PWM               |           |
| 7            | E.5      | OC3C                    | 3 PWM               | INT 5     |
| 6            | E.4      | OC3B                    | 2 PWM               | INT 4     |
| 3            | E.1      | TXD 0                   | 1 PWM               |           |
| 2            | E.0      | RXD 0                   | 0 PWM               | PCINT 8   |
| 64           | J.1      | TXD 3                   |                     | PCINT 10  |
| 63           | J.0      | RXD 3                   |                     | PCINT 9   |
| 13           | H.1      | TXD 2                   |                     |           |
| 12           | H.0      | RXD 2                   |                     |           |
| 46           | D.3      | TXD 1                   |                     | INT 3     |
| 45           | D.2      | RXD 1                   |                     | INT 2     |
| 44           | D.1      | SDA                     |                     | INT 1     |
| 43           | D.0      | SCL                     |                     | INT 0     |

