

REV.	DESCRIPTION	APPD	DATE
B/1	外壳弹片改直	杨 凯	0925'10
B/1	尺寸0.70改为0.55	杨 凯	0925'10

NOTES:

1.MATERIAL:

HOUSING: HIGH TEMPERATURE THERMOPLASTIC
UL94V_0,COLOR:BLACK.

CONTACT: COPPER ALLOYS.

COVER: COPPER ALLOYS OR STEEL.

2.PLATING:

UNDERPLATE: NICKEL.

CONTACT AREA: GOLD OVER NICKEL.

SOLDER AREA: TIN OVER NICKEL.

3.MULTIMEDIA CARD COMPATIBLE

订购须知

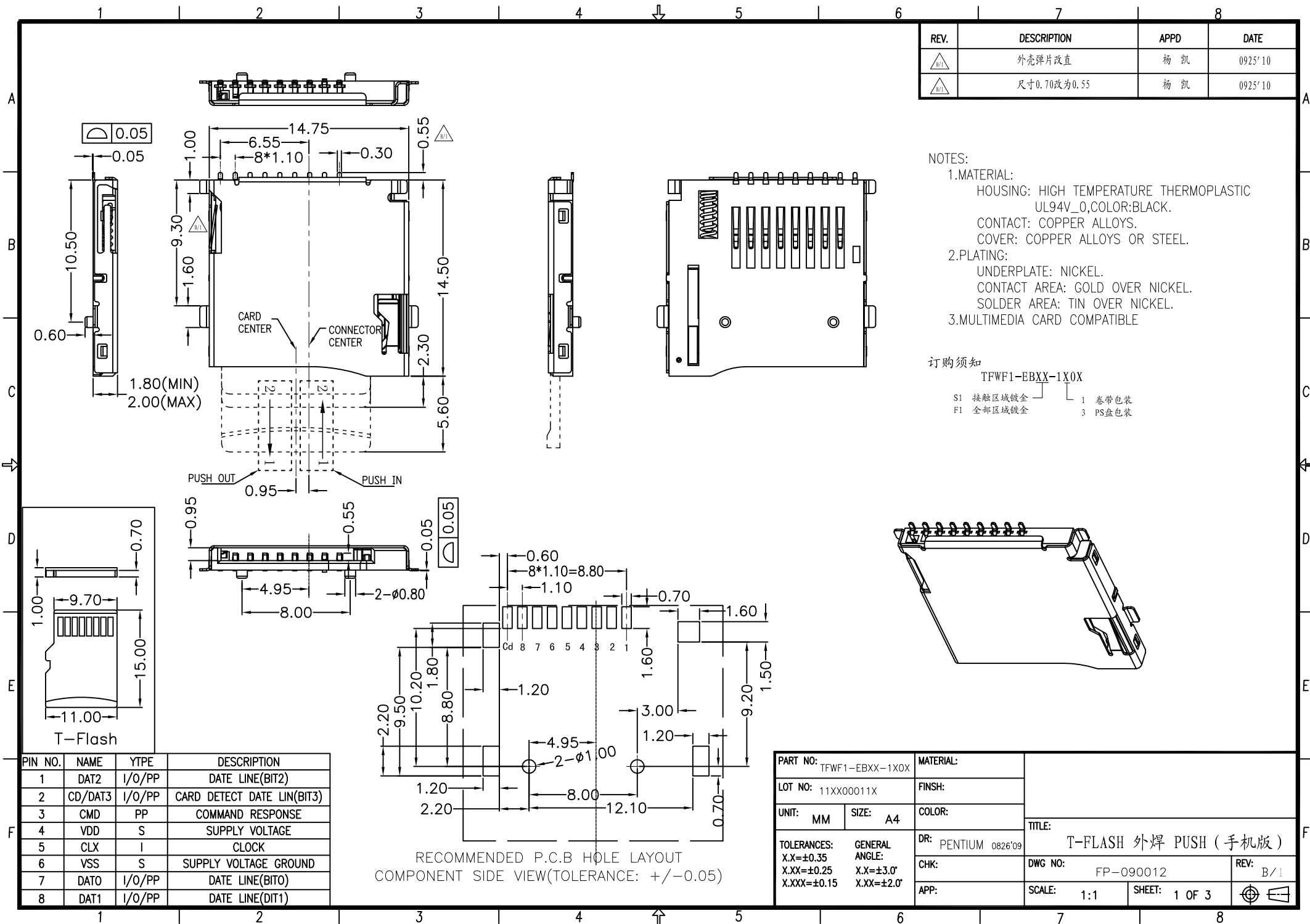
TFWF1-EBXX-1X0X

S1 接触区域镀金
F1 全部区域镀金

1 卷带包装
3 PS盘包装

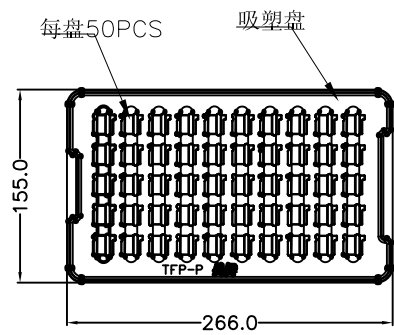
RECOMMENDED P.C.B HOLE LAYOUT
COMPONENT SIDE VIEW(TOLERANCE: +/-0.05)

PART NO:	TFWF1-EBXX-1X0X	MATERIAL:	
LOT NO:	11XX00011X	FINSH:	
UNIT:	MM	SIZE:	A4
TOLERANCES:	X.X=±0.35 X.XX=±0.25 X.XXX=±0.15	GENERAL ANGLE:	X.X=±3.0° X.XX=±2.0°
DR:	PENTIUM 0826'09	TITLE:	T-FLASH 外焊 PUSH (手机版)
CHK:		DWG NO:	FP-090012
APP:		SCALE:	1:1
		SHEET:	1 OF 3
		REV:	B/1



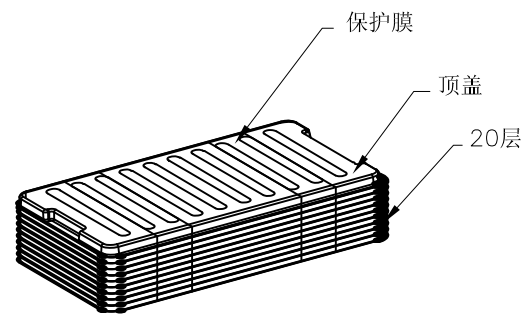
PIN NO.	NAME	YYPE	DESCRIPTION
1	DAT2	I/O/PP	DATE LINE(BIT2)
2	CD/DAT3	I/O/PP	CARD DETECT DATE LIN(BIT3)
3	CMD	PP	COMMAND RESPONSE
4	VDD	S	SUPPLY VOLTAGE
5	CLX	I	CLOCK
6	VSS	S	SUPPLY VOLTAGE GROUND
7	DAT0	I/O/PP	DATE LINE(BIT0)
8	DAT1	I/O/PP	DATE LINE(DIT1)

REV.	DESCRIPTION	APPD	DATE

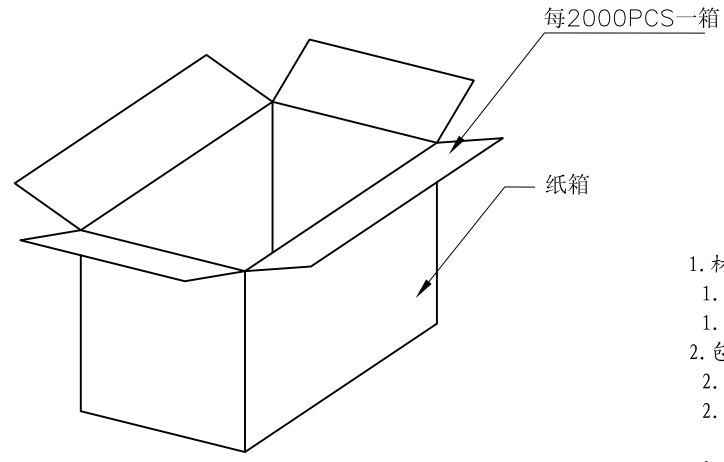


吸塑盘规格: 266*155*9
料厚0.35

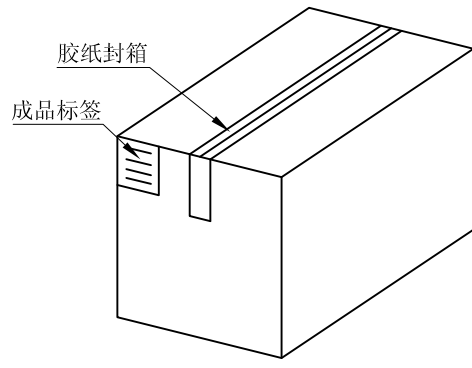
NO. 1



NO. 2



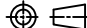
NO. 3

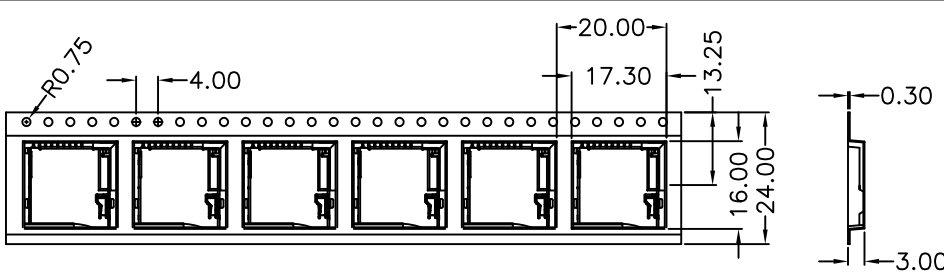


纸箱规格: 290*170*185

NO. 4

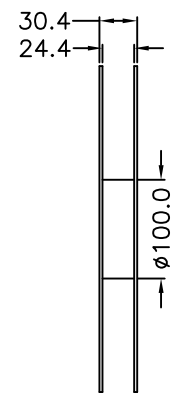
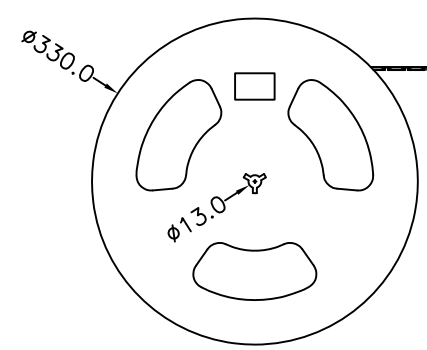
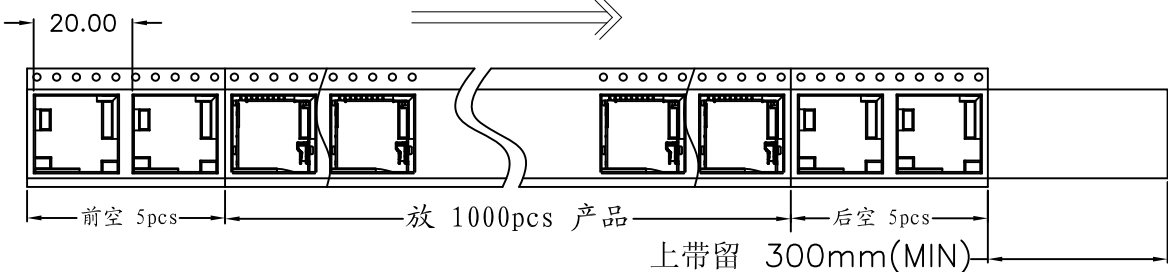
1. 材质要求:
 - 1.1 纸箱的材质为B=B; 外形尺寸为29*17*18.5CM;
 - 1.2 PS盘的材质为PS, PS盘的外形尺寸266*155*9MM;
2. 包装要求:
 - 2.1 每一盘装50PCS;
 - 2.2 每20盘累叠在一起, 共计1Kset, 上面需放一个空盘, 后用PE膜缠绕;
 - 2.3 把累叠好的PS盘两叠放入纸箱中共计2Kset;
 - 2.4 把包装好的成品打包封箱, 并在纸箱外贴上标签;

PART NO: TFWF1-EBXX-1X0X		MATERIAL:		TITLE: T-FLASH 外焊 PUSH (手机版)	
LOT NO:		FINSH:			
UNIT: MM	SIZE: A4	COLOR:			
TOLERANCES: X.X=±0.35 X.XX=±0.25 X.XXX=±0.15		GENERAL ANGLE: X.X=±3.0° X.XX=±2.0°		DR: PENTIUM 0826'09	
				CHK:	
				APP:	
		DWG NO: FP-090012		REV: B / 1	
		SCALE: 1:1		SHEET: 2 OF 3	
					



REV.	DESCRIPTION	APPD	DATE

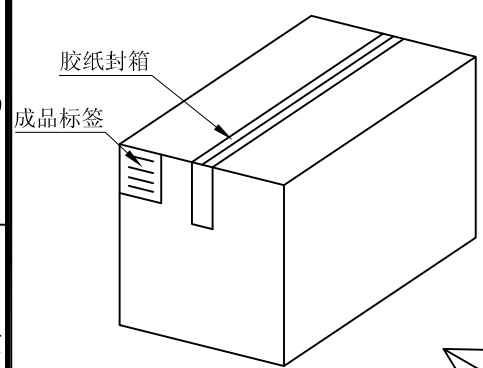
出料方向



NO. 1

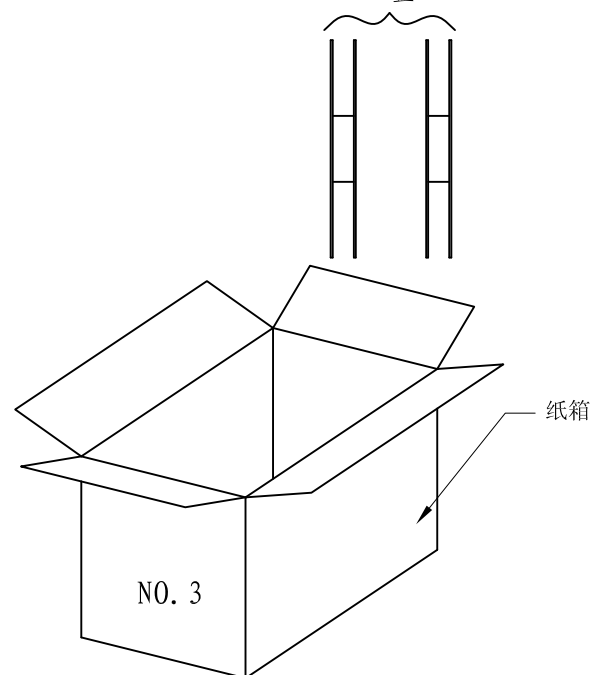
NO. 2

12盘



纸箱规格: 330*330*385

NO. 4



纸箱

NO. 3

NO. 3

1. 材质要求:
- 1.1 纸箱的材质为B=B; 外形尺寸为33*33*38.5;
 - 1.2 卷盘的材质为PVC, 卷盘的外形尺寸为Ø330*30.4;
 - 1.3 卷带的材质为PVC, 卷带的外形尺寸为20200*24.00*3.0mm;
2. 包装方式:
- 2.1 将卷带放入包装机后, 前空5PCS, 后放产品1000PCS, 再后空5PCS; 上带留300MM长度。
 - 2.2 将包装好的产品从包装机上取下并包装好;
 - 2.3 把累叠好的12盘叠放入纸箱中共计12Kset;
 - 2.4 把包装好的成品打包封箱, 并在纸箱外贴上标签

PART NO: TFWF1-EBXX-1X0X		MATERIAL:	
LOT NO:		FINSH:	
UNIT: MM	SIZE: A4	COLOR:	
TOLERANCES: X.X=±0.35 X.XX=±0.25 X.XXX=±0.15		DR: PENTIUM 0826'09	
GENERAL ANGLE: X.X=±3.0' X.XX=±2.0'		CHK:	
APP:		DWG NO: FP-090012	
		SCALE: 1:1	REV: B/1
		SHEET: 3 OF 3	

T-FLASH 外焊 PUSH (手机版)