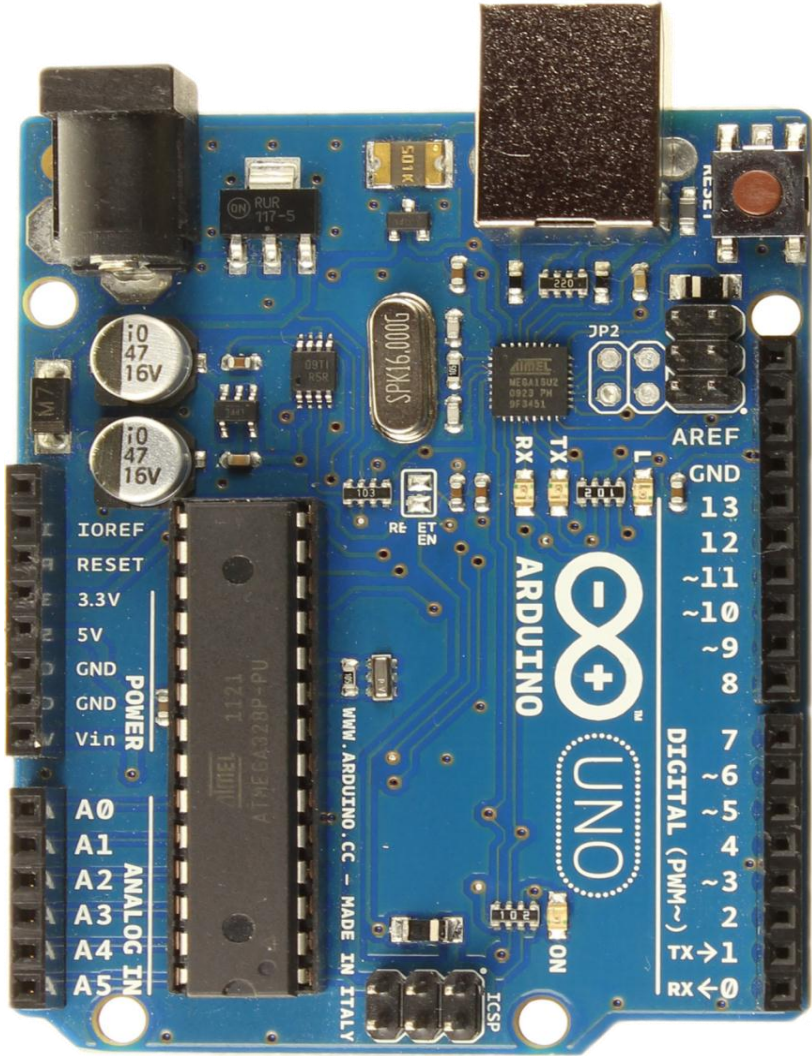


PC0
PC1
PC2
PC3
PC4
PC5

ADC0
ADC1
ADC2
ADC3
ADC4
ADC5

(I2C) SDA
(I2C) SCL

PCINT 8
PCINT 9
PCINT10
PCINT11
PCINT12
PCINT13



AREF
Masse
PCINT 5
PCINT 4
PCINT 3
PCINT 2
PCINT 1
PCINT 0

OC2A
OC1B
OC1A

(SPI) SCK
(SPI) MISO
(SPI) MOSI
(SPI) SS
PWM
I/O 8

PB5
PB4
PB3
PB2
PB1
PB0

PCINT23
PCINT22
PCINT21
PCINT20
PCINT19
PCINT18
PCINT17
PCINT16

AIN1
AIN0
T1
T0
INT1
INT0
TXD
RXD

I/O 7
PWM
PWM
I/O 4
PWM
I/O 2
I/O 1
I/O 0

PD7
PD6
PD5
PD4
PD3
PD2
PD1
PD0